

A photograph of a plaid sofa with a book and a mug. The sofa is covered in a blue, red, and white plaid fabric. A book with a matching plaid cover is lying on the sofa, and a white mug with a blue and red plaid pattern is next to it. The background is a wall with a similar plaid pattern.

HUNDRED<sup>+</sup>  
HEROINES<sub>♀</sub>

# LOOKING AT ART

Nobukho Nqaba  
*Ekhaya*

*All images © Nobukho Nqaba*

# LOOKING at ART

---

**There is no right or wrong response to art.**

It can speak to each of us in different and legitimate ways.

If you stop to spend time **observing** and reading an artwork, you start to see it differently, and connect to its **cultural importance** and **meanings**.

# FIRST LOOK

Without knowing anything about the artwork, look at these installation images of Nobukho Nqaba's work, *Ekhaya*.

What are your **FIRST** reactions?



DUSTHOUSE  
EXHIBITION  
CONTINUES





Ekhaya © Nobukho Nqaba

# INSTALLATION ART

**Making installation art involves using mixed-media (different materials and objects) to assemble an artwork for a particular location.**

**It's usually temporary and often huge!**

**This installation uses polythene plastic bags, a mattress and bed frame, a bedside table, a sofa, a paraffin lamp, a Bible, a coffee mug, and bricks.**

# LOOKING MORE CLOSELY

Examine details such as textures, materials, repetition of patterns, colours and lines.

What's the mood of the installation? Is it calm, dramatic, cold, mysterious, controlled, chaotic, lifeless, warm, joyful, luxurious, comfortable, soft, harsh...?

How has this atmosphere been created?

Spend 3 minutes sketching what you see in the last image. As you draw, think about the symbolism of different objects in the installation.

**What do you think this artwork is saying?**





# ABOUT THE ARTWORK

Amongst other things, this installation represents **home**.

Imagine living in this space...how would it feel?

What would your lifestyle be like?

What do you think the artist is saying about home?

**It might help to know something about the artist...**

# **NOBUKHO NQABA**

**Nobukho was born in Butterworth in the Eastern Cape, South Africa.**

**In this work, she reflects on personal memories of migration in South Africa, and of growing up in an informal settlement in Cape Town.**

**She uses checkered plastic bags to symbolise migration and also to show how fragile, unstable and changeable her experiences of home have felt.**

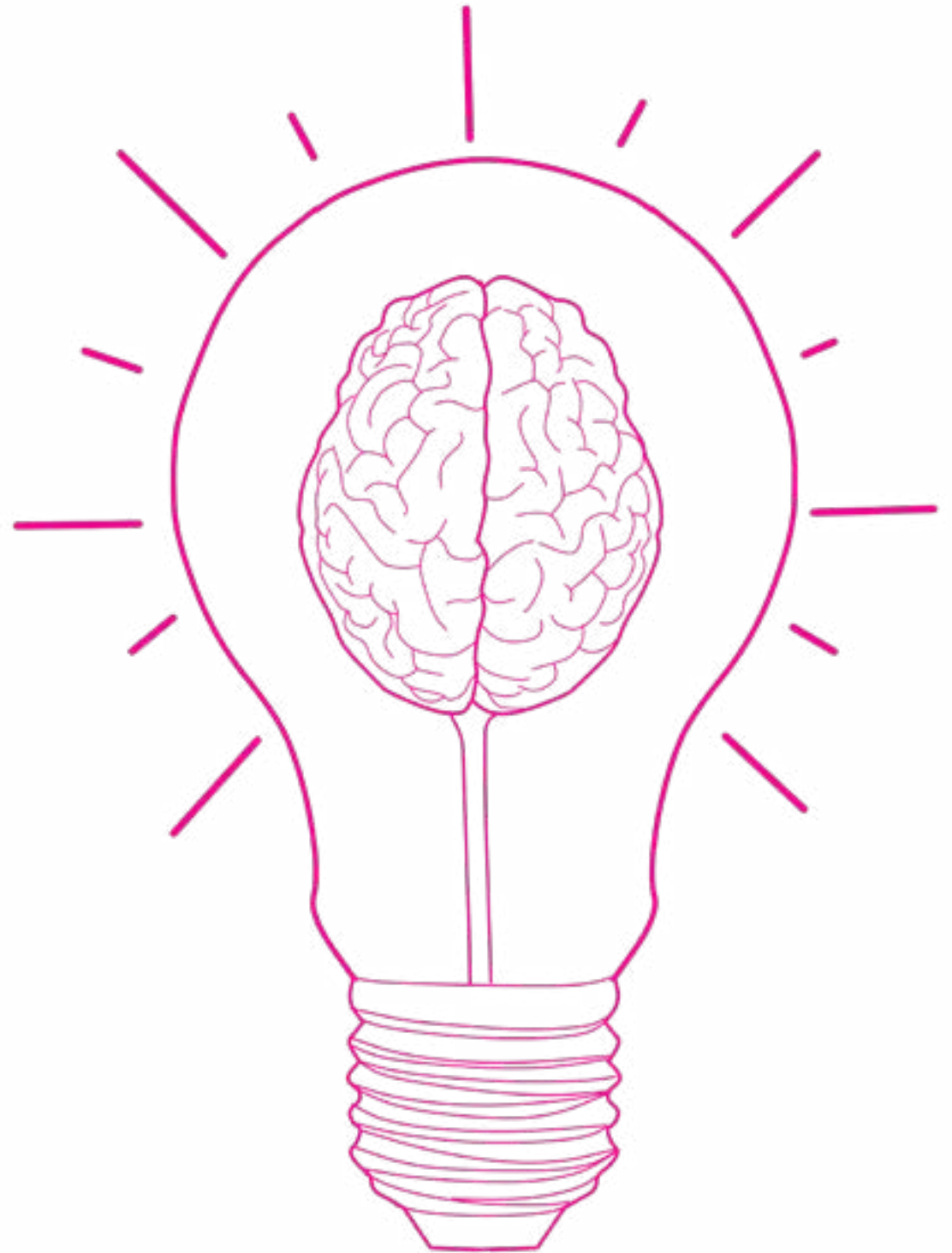
# REFLECT

Think back to your first thoughts about this artwork.

What do you understand about the installation now that you didn't at first?

What has this installation helped you to understand about the artist's experiences and background?

**BE  
CREATIVE!**



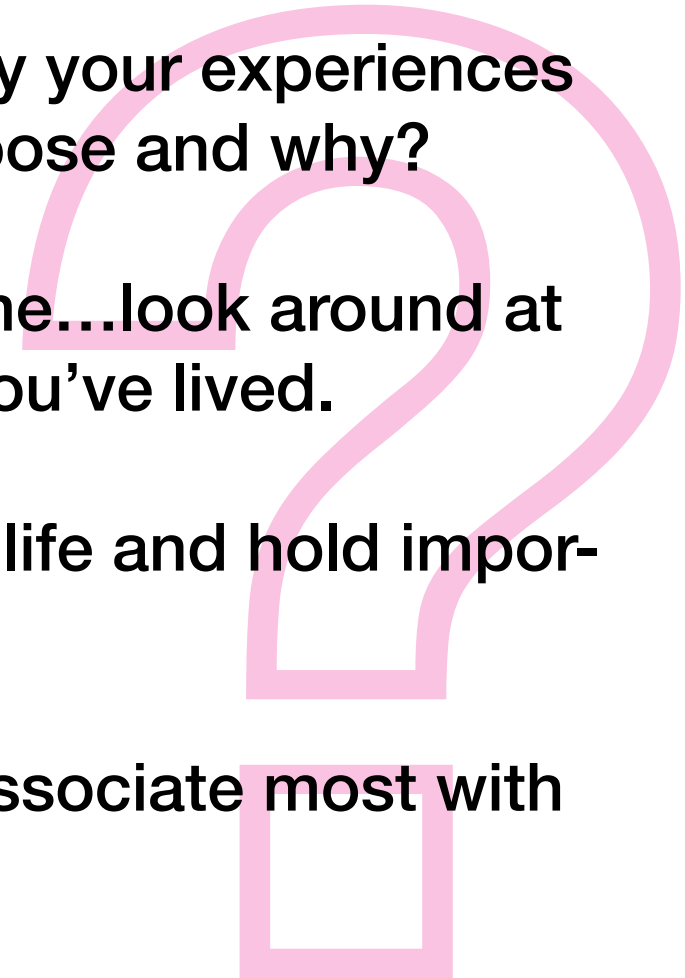
# PLAN YOUR OWN INSTALLATION

If you had to assemble an installation to convey your experiences and feelings of home, what would you choose and why?

Think about your everyday experiences of home...look around at home...think back to previous places you've lived.

Which objects have featured repeatedly in your life and hold important meanings for you?

What materials, textures and colours do you associate most with home?



**Choose the objects which are significant to you and take photographs of them.**

**Share them on IG - we'd love to see which objects are important to you, so make sure you tag us and use the hashtag **#HHObjects****



**@hundredheroines**  
**#HHObjects**